



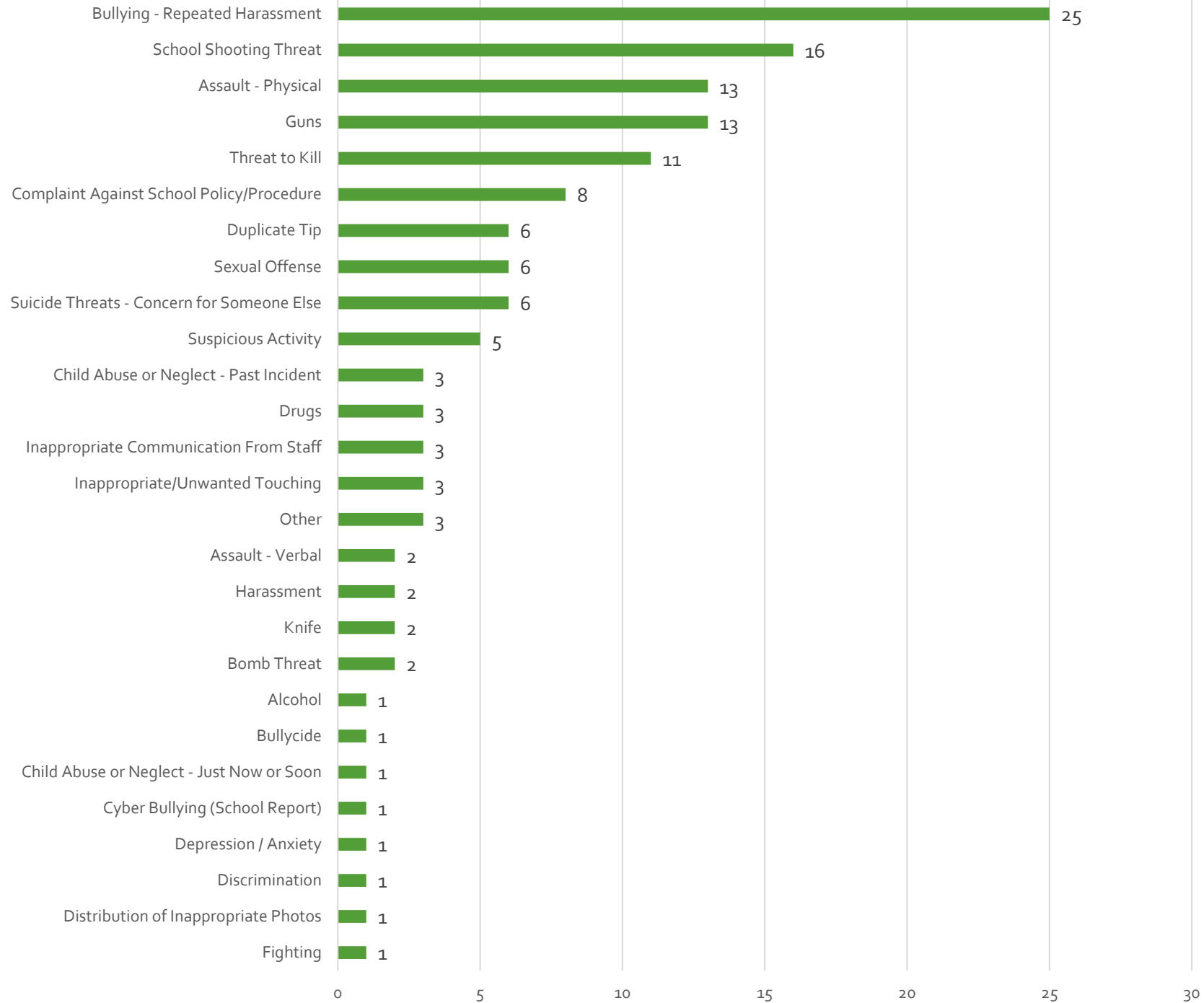
February 2024 Courage2Report Activity Summary

FEBRUARY 2024 TIP SUMMARY

In February 2024, Courage2Report received **142** tips.

Compared to last year, (141 tips in February 2023), we saw almost the same activity.

Bullying was the number one most reported tip type this month, same as February 2023.





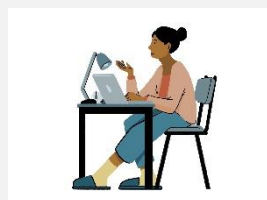
Tips by the Day

In the month of February, Friday was the day of the week with the most tips reported. This is a change from last month. Most tips were received on Wednesdays and Thursdays during January 2024.



Tips by the Hour

In February, the busiest time of day was between 2:00pm and 3:59pm.



Preferred Tipping Method

Reporting from a computer's browser was the preferred way to submit tips in February.

HandleWithCare (HWC)

In February 2024, we received **24** HandleWithCare tips.

In February 2023, we received a total of **9** HandleWithCare tips.

Did you know? In some areas, HWC includes other First Responders, such as EMS and Fire.

The “HandleWithCare” Model:

If a law enforcement officer encounters a child during a call, child’s information is forwarded to the school before the school bell rings the next day. The school may implement individual, class and whole school trauma-sensitive curricula so that traumatized children are “Handled With Care”. If a child needs more intervention, on-site trauma-focused mental healthcare is available at the school.

HWC CONTACT INFORMATION:

Tammy Walden

School Response Coordinator
Missouri Juvenile Justice Association
308 E. High Street, Suite 105
P.O. Box 1332
Jefferson City, MO 65102
tammy@mija.org
573.616.1058 – office
573.745.0844 – cell



What can the tipster see?

What the tipster CAN see:

- Any dialog and any changes made in the dialog tab
- Any attachments they add

What the tipster CANNOT see:

- The original tip or any changes made to the tip i.e., grammatical corrections and sanitization of the tip.
- Any attachments C2R staff, school admin, or LEO add to the tip.
- Team Communication (this is for conversation between C2R staff, school admin, and LEO. NOT the tipster).
- Dispositions (remember C2R does not evaluate dispositions, we just log that one was received).



Where We've Been, Where We're Goin!

Past:

- 1/3/2024 - Bunceton R-VI - Teacher PD Day
- 1/29/2024 - Carthage Library - Cancelled due to lack of interest - Student Presentation
- 2/7/2024 - Poplar Bluff - Administration Presentation
- 2/27/2024 - Cape Girardeau - FBI School Safety Conference
- 3/5/2024 - Virtual IALEIA - Lunch & Learn
- 3/6-3/7/2024 - Columbia - Behavioral Risk Summit
- 3/13/2024 - Lake Ozark - MO Sheriffs' Assoc Conference

Future:

- 3/26/2024 - Columbia - CES Academy
- 4/20/2024 - St. Louis - You Are Not Alone Resource Fair
- 5/11/2024 - St. Peters - Opioid Prevention Seminar



ATTENTION:
SCHOOL ADMINISTRATORS, SCHOOL STAFF, LAW
ENFORCEMENT, STUDENTS, & COMMUNITY
MEMBERS !

NEED TRAINING, OR A REFRESHER ON ALL
THINGS COURAGE2REPORT?

Email us! We would love to set that up with you!

Courage2Reportmo@mshp.dps.mo.gov



Violent Online Groups Extort Minors to Self-Harm and Produce Child Sexual Abuse Material

The FBI is warning the public of violent online groups deliberately targeting minor victims on publicly available messaging platforms to extort them into recording or live-streaming acts of self-harm and producing child sexual abuse material (CSAM). These groups use threats, blackmail, and manipulation to control the victims into recording or live-streaming self-harm, sexually explicit acts, and/or suicide; the footage is then circulated among members to extort victims further and exert control over them. <https://www.ic3.gov>



**National Center
for School Safety**

Introducing the *FREE* School Threat Assessment Toolkit!

Developed by experts Dewey Cornell and Jennifer Maeng, in collaboration with school safety leaders and government agencies, this toolkit is your comprehensive guide to implementing behavioral threat assessment in schools. It offers practical resources and training materials to support your violence prevention efforts while ensuring student rights are upheld.

The toolkit explores these three areas:

- **Selecting and Training Your Threat Assessment Team:** Learn how to assemble and train a competent threat assessment team tailored to your school's needs, emphasizing equitable implementation and community support.
- **Implementing Threat Assessment:** Gain insight into the principles of threat assessment, including identifying typical pathways to violence, crucial for enhancing your school's safety plan.
- **Evaluating Program Effectiveness:** Discover strategies for evaluating the effectiveness of your threat assessment program, covering topics such as fidelity to implementation and its impact on students. [School Threat Assessment Toolkit](#) ← **LINK!**

Human Trafficking Resources for the K-12 Community

- **What is Human Trafficking?**
 - Youth Human Trafficking
 - Indicators and Risk Factors
- **Strategies for Schools to Address Human Trafficking**
 - Create a Safe and Supportive School Environment
 - Increase Awareness and Education
 - Develop and Implement Prevention and Response Plans

January 2024

SCHOOLSAFETY.GOV
Human Trafficking Resources for the K-12 Community

Learn what human trafficking is, how to prevent it in school communities, and what to do to support students affected by the crime.

What is Human Trafficking?

The U.S. Department of Homeland Security Blue Campaign website states that human trafficking is a crime that involves the use of force, fraud, or coercion to obtain some type of labor or commercial sex act. It is also important to note that causing someone under the age of 18 to engage in a commercial sex act, regardless of using force, fraud, or coercion is human trafficking under U.S. law. Every year, millions of people are trafficked around the world, including students in the American school system.

Those affected by human trafficking can be any race, gender identity, sex, ethnicity, nationality, or immigration status, and no community, school, socioeconomic group, or student demographic is immune to the threat of this crime. Cases of trafficking are found in every area of the country—including rural, suburban, and urban settings alike—with devastating consequences including physical, emotional, and psychological trauma.

Youth Human Trafficking

While there is no standard profile, many traffickers target youth who are vulnerable to exploitation simply because they may be less equipped to make informed decisions when presented with a situation that could lead to trafficking. Peer-to-peer recruitment may also take place in schools, which is when traffickers coerce or force youth under their control into recruiting their peers with promises of payment, better status, or less abuse.

Indicators of Trafficking

Youth affected by human trafficking can exhibit physical, behavioral, or social indicators. Some of these indicators may include:

- Unexplained absences
- Sudden or dramatic changes in behavior
- Newly obtained material possessions like expensive new clothing or electronics
- The appearance of deprivation or withdrawal.

While no single indicator is necessarily proof of human trafficking, recognizing these types of signs is the first step in identifying potential individuals impacted by this crime.

Risk Factors

Potential risk factors that may make students vulnerable to exploitation or trafficking may include:

- Adverse childhood experiences
- History of trauma
- Housing instability/homelessness
- Lack of supportive adult figures

Traffickers recognize these factors may make someone more likely to take risks to access opportunities and stability.

To report suspected human trafficking to Federal law enforcement, please call 1-866-347-2423. To get help from the National Human Trafficking Hotline, please call 1-888-373-7888 or text HELP or INFO to BeFree (233733).

SchoolSafety.gov

Click Here For
Additional Information



FBI Reports Increase in Hate Crimes at U.S. Schools

After the categories of residence/home and highway/road/alley, school was the third most common location for a reported hate crime offense to occur during the five-year period of 2018 to 2022. Hate crime in school comprised as much as 10 percent of all reported hate crime offenses in the most recently observed year of 2022. Transcending a basic count, this report analyzes the occurrences and fluctuations of hate crimes reported in the school environment from 2018 through 2022, and their specific bias motivations.

[Click Here For Full Report](#)



Table 1: Total Reported Hate Crime by Year, 2018-2022

Year	Incidents	Offenses
2018	7,181	8,492
2019	7,874	9,132
2020	9,949	12,895
2021	10,891	12,470
2022	11,643	13,346

The UCR Program provides three school-related options regarding the location where an offense occurred:

- School – Elementary/Secondary
 - Defined as institutions for the instruction of children from preschool through 12th grade.
- School – College/University
 - Defined as institutions for the higher education of individuals, which gives instruction in specialized fields; community colleges; trade schools.
- School/College
 - Unspecified definition.

Prior to 2010, School/College was the only data value for the location data element indicating a school as the location of a criminal offense and was used for all school locations, regardless of the age or advancement of enrolled students. In 2010, School – Elementary/Secondary and School – College/University were added as data values to distinguish the demographics of the enrolled students at the location of school-related offenses. Although agencies are encouraged to specify Elementary/Secondary or College/University when designating school as the offense location, the original comprehensive School/College location is still an option.



NEED SUPPLIES?

LET US KNOW.

Our new brochure will contain an order form for our promotional items!



- BROCHURES
- BOOKMARKS
- MAGNETS
- PENCILS
- POSTERS



Contact Us:

Courage2Report

Missouri State Highway Patrol -

MIAC. Call: 866-362-6422

(Administrative Calls) Email:

Courage2Reportmo@mshp.dps.mo.gov

Website: Courage2ReportMO.com

Courage2Report Missouri

SAY
Something to Someone!

C2R

App Store GET IT ON Google Play

Confidentially Report Concerns - 24/7

Submit a tip:

Mobile app: **Courage2ReportMO** 

Online: www.Courage2ReportMO.com

Call: 866-748-7047

Text: "C2R" to 738477